



HOPETOUN
SCOTLAND'S FINEST STATELY HOME



Nature Detectives

Use your good observation and wildlife watching skills to spot the nature detectives clues in the Grounds at Hopetoun House.

Try to solve the mystery of the empty home and figure out what might live here:



The options for who lives here are:



Grey Squirrel?



Owl?



Spider?



Badger?



Frog?



Blue Tit?



Explore the grounds to find animal homes using the map on page 2 and the clues given below. This will help you with your investigation and after collecting all 5 clues, you should know who lives in the home shown above. **They can be done in any order.**



Head for the **round pond** where the green star is, home to a selection on small critters and birds. Find the picture board under the tree on top of the bank- it will tell you which animal lives near here.

Draw a picture of the animal and its home:

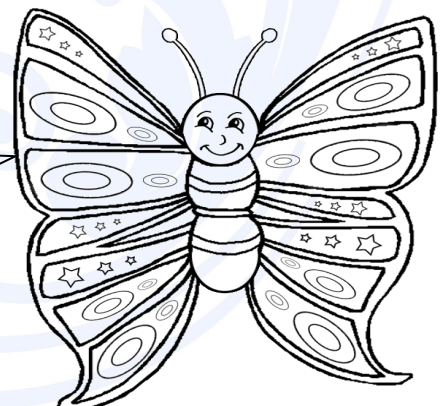


Look at the big grey, **beech tree** to the right of the round pond where the red star is. Keen nature detectives will spot a big hole in the tree which used to be home to this nocturnal bird of prey.

Which animal lives here?

Clue: They can turn their heads almost all the way around!

Colour Me in!



The coloured stars on the map show where exploring Nature Detectives might be able to find clues to help solve the mystery of the empty home.



★ The Sea Walk Trail with its blue arrows will guide you to find clues near the purple star, look for **Post 6**. Find evidence of animals feeding on the ground, and look in the trees, which animal lives here in this DREY?

Clue- its name rhymes with DREY.
What size of ball do you think this nest is: Football? Cricket Ball? Beach Ball?

Join the dots!



★ Walking towards the **North Deer Park**, where the blue star is on the map, you will find a home of some mini creatures.

Spot the clue in the habitat pile to figure out which animal lives here:

★ The orange star leads you to the **Cannons** where you should find the clues in the trees which will tell you the animal who lives here.

The clues told me that the animal who lives in the trees is a:

B _____ T _____

After completing my nature detective investigation, the animal that I think lives in the empty home is:

A _____!

For the answers to this trail, head to the Grounds and Wildlife page on our website.