

MIDHOPE CASTLE

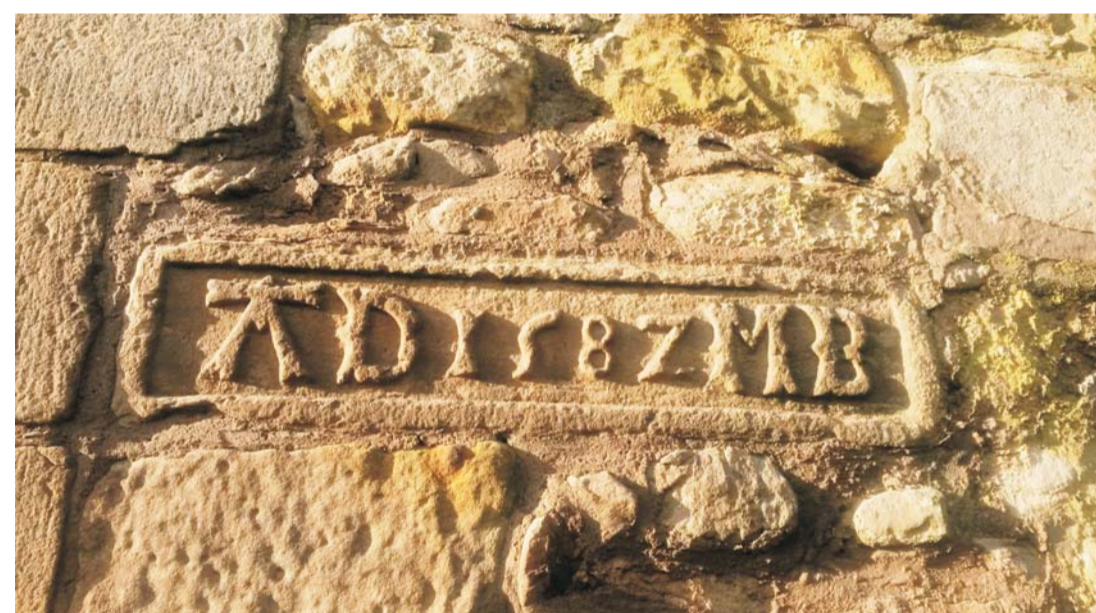
A BRIEF HISTORY

1458 - The first reference known 'Medhope' in a document concerning a boundary dispute between Henry Levingstone and John Martyne, laird of Medhope. John Martyne then built Medhope Castle where he remained as laird until his death in 1478.

1478 - Midhope passed over to a Henry Levingstone.

1582 - Midhope is passed to Alexander Drummond and his wife Marjorie Bruce.

1587 Alexander Drummond rebuilt the tower and turrets and a date stone containing their initials commemorates this. Originally located in the lintel of the front door this stone can now be seen on the gateway.



The initials of Alexander Drummond and wife Marjorie Bruce who took ownership of Midhope in 1587

1664 - The present doorway and lintel are the work of 'G. L.' George Livingston, third earl of Linlithgow. It was during his lifetime the castle took the shape which we see today.

1678 - The castle was acquired by John Hope and given a facelift when an entrance tower was removed and the extension to the east was heightened and extended. A new doorway was added along with a small courtyard.



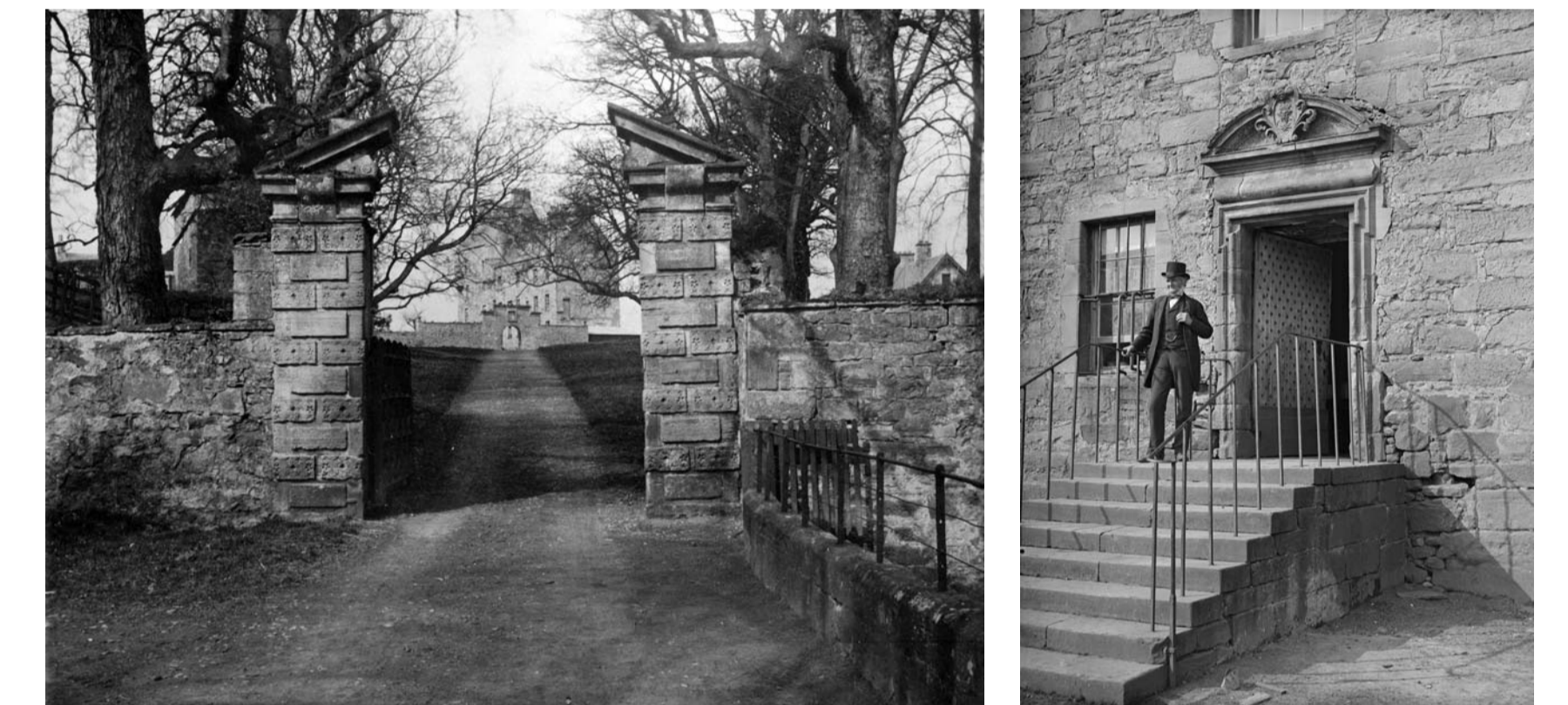
Midhope Castle in the 21st Century (2016)



*Historic photograph showing view from South East (c. 1885)
© Historic Environment Scotland (John Fleming Collection).*

1710 - Sir Robert Sibbald described 'Meidhope' as a 'fine tower house with excellent gardens, one of the seats of the Earls of Hopetoun'.

1851 - The census reveals there are 53 people in 10 families living around Midhope, including 4 game keepers, 4 foresters, 2 labourers, a groom, a carter, a gardener, a joiner, and a number of paupers.



*View from the South East (date unknown)
© Crown Copyright: Historic Environment Scotland.*

*Detail of entrance doorway (c.1885)
© Historic Environment Scotland
(John Fleming Collection).*

1926 - Records describe the Castle as deteriorating including a fine oak staircase with twisted balusters 'now sadly dilapidated' rising in the East Range from the first to fourth floors.

1988 - Restoration work commences including the replacement of the roof on the East Range, a new roof for the West Tower as well as the insertion of new window frames into existing openings.

2013 - Midhope is chosen as a film location for TV series Outlander.